

\$749,800 - 88 Sceptre Close Nw, Calgary

MLS® #A2203820

\$749,800

3 Bedroom, 4.00 Bathroom, 2,025 sqft
Residential on 0.12 Acres

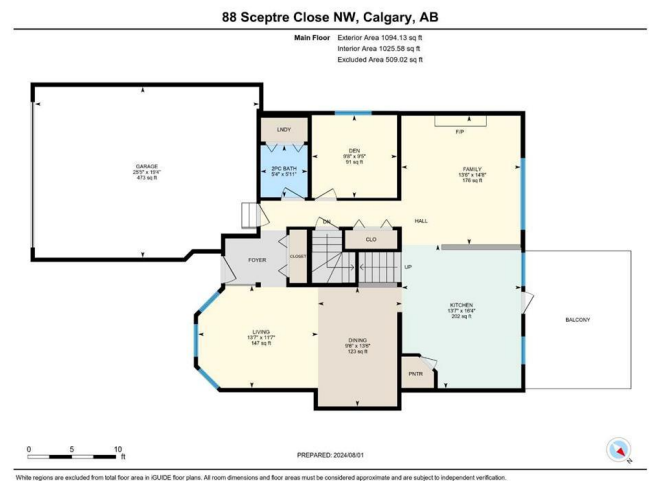
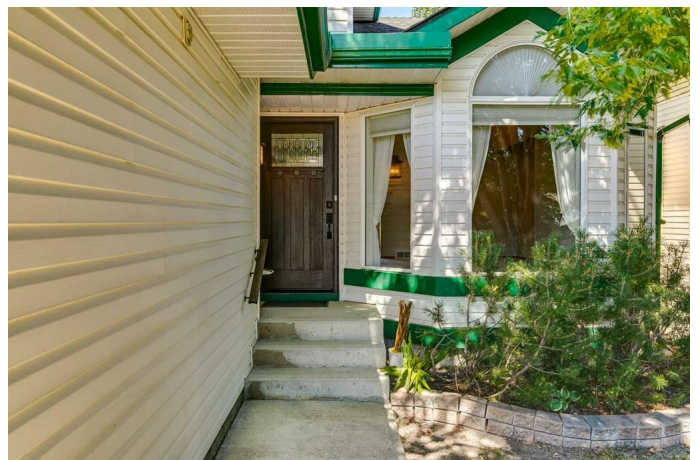
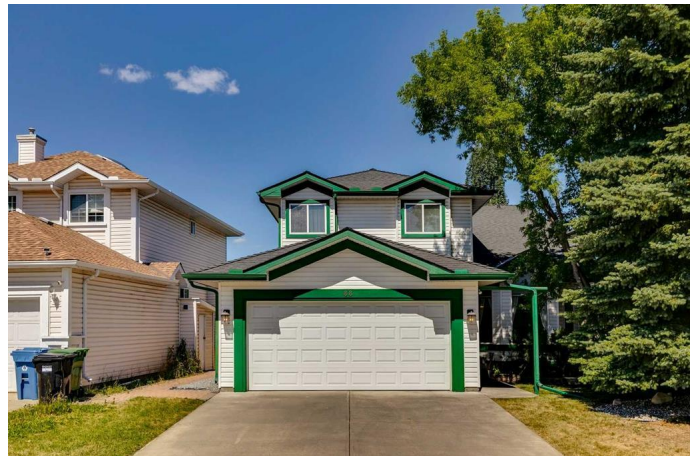
Scenic Acres, Calgary, Alberta

Welcome to 88 Sceptre Close NW, a stunning 2-storey home nestled in the highly sought-after family community of Scenic Acres. This beautiful property offers a front-attached garage (25 feet long!) and a walkout basement that opens to a private yard, perfect for both relaxation and entertainment. Enjoy the outdoors on the expansive deck off the main floor, or savor your morning coffee on the balcony off the primary bedroom.

Step inside to a bright, vaulted front living room that seamlessly flows into a formal dining area, perfect for hosting family gatherings. The back of the house features a spacious kitchen with a central island, an inviting eating area leading to the large deck overlooking the backyard, and a cozy family room complete with built-ins and a gas fireplace.

The main floor also includes a convenient home office and a 2-piece bath, catering to all your daily needs. Upstairs, you'll find a massive owner's retreat with a luxurious 5-piece ensuite, a walk-in closet, a second gas fireplace, and a private balcony offering serene views of the yard. Two additional generously-sized bedrooms and a 4-piece bath complete the upper level.

The basement is thoughtfully designed with a partially finished layout, featuring a large rec room with a (third!) fireplace, a 3-piece bath, and a walkout entrance to the spacious



backyard. The remaining unfinished portion of the basement includes a rough-in for a kitchen sink, as the original plan was to apply to the City to develop a potential basement suite (subject to approval with the City of Calgary).

Recent upgrades include a new front door, garage door, roof, and furnace blower (2023). Situated on a quiet street, this home is close to schools, parks, and offers easy access to transit, Stoney Trail, and Crowchild Trail. Scenic Acres is an amazing family community with 3 schools, the twin arena, multiple parks and greenspaces, and an active community association. Don't miss the opportunity to make this incredible home yours—book your showing today!

Built in 1994

Essential Information

MLS® #	A2203820
Price	\$749,800
Bedrooms	3
Bathrooms	4.00
Full Baths	3
Half Baths	1
Square Footage	2,025
Acres	0.12
Year Built	1994
Type	Residential
Sub-Type	Detached
Style	2 Storey Split
Status	Active

Community Information

Address	88 Sceptre Close Nw
Subdivision	Scenic Acres
City	Calgary
County	Calgary

Province Alberta
Postal Code T3L 1Y1

Amenities

Amenities Other
Parking Spaces 4
Parking Double Garage Attached, Enclosed, Front Drive, Garage Door Opener, Garage Faces Front, Oversized, Plug-In
of Garages 2

Interior

Interior Features Bookcases, Built-in Features, Ceiling Fan(s), Central Vacuum, Closet Organizers, Double Vanity, Kitchen Island, Pantry, Storage, Vinyl Windows, Walk-In Closet(s)
Appliances Dishwasher, Dryer, Electric Range, Garage Control(s), Gas Water Heater, Microwave, Range Hood, Refrigerator, Washer, Window Coverings
Heating Central, High Efficiency, Forced Air, Natural Gas
Cooling None
Fireplace Yes
of Fireplaces 3
Fireplaces Basement, Bedroom, Family Room, Gas
Has Basement Yes
Basement Exterior Entry, Full, Partially Finished, Walk-Out

Exterior

Exterior Features Balcony, Private Yard
Lot Description Back Yard, Landscaped, Lawn, Street Lighting
Roof Asphalt Shingle
Construction Vinyl Siding, Wood Frame
Foundation Poured Concrete

Additional Information

Date Listed March 20th, 2025
Days on Market 13
Zoning R-CG
HOA Fees 60
HOA Fees Freq. ANN

Listing Details

Listing Office

2% Realty

Data is supplied by Pillar 9â„¸ MLSÂ® System. Pillar 9â„¸ is the owner of the copyright in its MLSÂ® System. Data is deemed reliable but is not guaranteed accurate by Pillar 9â„¸. The trademarks MLSÂ®, Multiple Listing ServiceÂ® and the associated logos are owned by The Canadian Real Estate Association (CREA) and identify the quality of services provided by real estate professionals who are members of CREA. Used under license.