

\$188,000 - 226, 4600 130 Avenue Se, Calgary

MLS® #A2195107

\$188,000

0 Bedroom, 0.00 Bathroom,
Commercial on 0.00 Acres

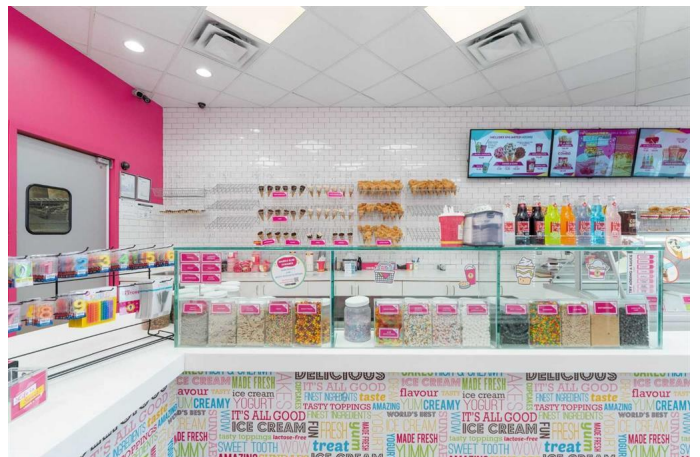
New Brighton, Calgary, Alberta

Looking to be your own boss and run a profitable business? Look no further than this marble slab franchise located in a fantastic neighborhood with desirable demographics and plenty of traffic. This turn-key operation is ready for you to step in and start making money from day one. This franchise has a proven history of success and is located in a complex with major anchor stores and tons of brand name stores, ensuring a steady stream of foot traffic. Plus, with a professionally managed operation, you can focus on running the business and serving up delicious ice cream to your satisfied customers. Don't miss out on this opportunity to own a thriving business in a prime location. Contact us today to learn more about this exciting franchise opportunity. The potential Buyer must sign confidentiality agreement before any business information is released. Please don't disturb owner or staff for any questions.

Built in 2006

Essential Information

| | |
|------------|------------|
| MLS® # | A2195107 |
| Price | \$188,000 |
| Bathrooms | 0.00 |
| Acres | 0.00 |
| Year Built | 2006 |
| Type | Commercial |
| Sub-Type | Retail |



Status Active

Community Information

Address 226, 4600 130 Avenue Se
Subdivision New Brighton
City Calgary
County Calgary
Province Alberta
Postal Code T2Z 0C2

Additional Information

Date Listed February 18th, 2025
Days on Market 43

Listing Details

Listing Office RE/MAX Realty Professionals

Data is supplied by Pillar 9â„¢ MLSÂ® System. Pillar 9â„¢ is the owner of the copyright in its MLSÂ® System. Data is deemed reliable but is not guaranteed accurate by Pillar 9â„¢. The trademarks MLSÂ®, Multiple Listing ServiceÂ® and the associated logos are owned by The Canadian Real Estate Association (CREA) and identify the quality of services provided by real estate professionals who are members of CREA. Used under license.