

\$15 - 110, 1330 15 Avenue Sw, Calgary

MLS® #A2098905

\$15

0 Bedroom, 0.00 Bathroom,
Commercial on 0.00 Acres

Beltline, Calgary, Alberta

Rare find, 2,808 sq. ft. currently occupied by month to month tenant also vacant units of 745 sq. ft. & 408 sq. ft available now, 2nd Floor Office units within Wellington Square on busy 14 Street SW offered at below market rental rates. Other 2nd floor units , occupied by Month to Month Tenants and available with notice, 1,267 sq. ft., 1,298 sq. ft., 2,808 sq. ft. up to 4,075 sq. ft. contiguous. Double row front parking and 24 stalls in rear. Excellent main floor Tenant mix and built in draw from 12 floor residential condo building on site as well dense surrounding residential development.

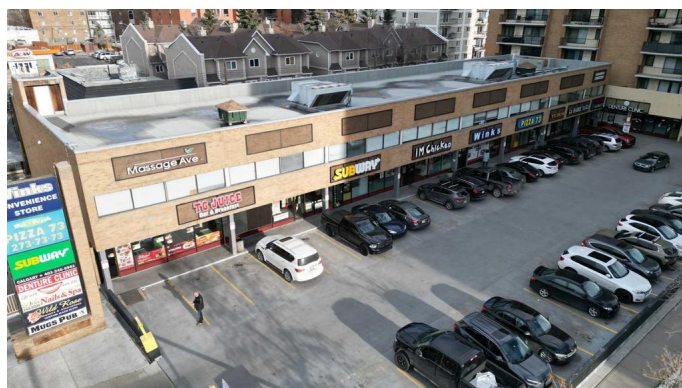
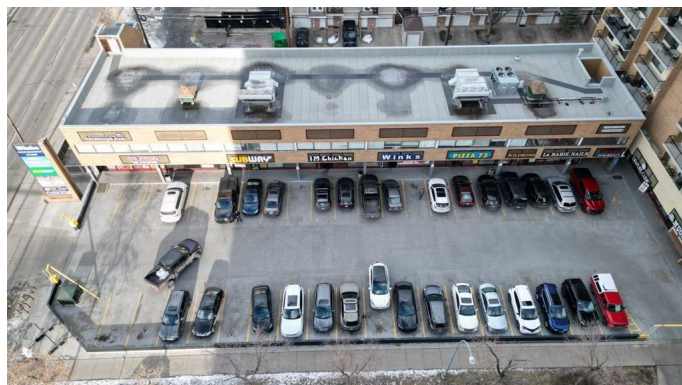
Built in 1973

Essential Information

MLS® #	A2098905
Price	\$15
Bathrooms	0.00
Acres	0.00
Year Built	1973
Type	Commercial
Sub-Type	Retail
Status	Active

Community Information

Address	110, 1330 15 Avenue Sw
Subdivision	Beltline
City	Calgary
County	Calgary



Province Alberta
Postal Code T3C 3N6

Amenities

Parking Spaces 80

Additional Information

Date Listed December 28th, 2023
Days on Market 459
Zoning CC-COR CENTRE CITY COMMER

Listing Details

Listing Office CENTURY 21 BAMBER REALTY LTD.

Data is supplied by Pillar 9â„¢ MLSÂ® System. Pillar 9â„¢ is the owner of the copyright in its MLSÂ® System. Data is deemed reliable but is not guaranteed accurate by Pillar 9â„¢. The trademarks MLSÂ®, Multiple Listing ServiceÂ® and the associated logos are owned by The Canadian Real Estate Association (CREA) and identify the quality of services provided by real estate professionals who are members of CREA. Used under license.